

DRC

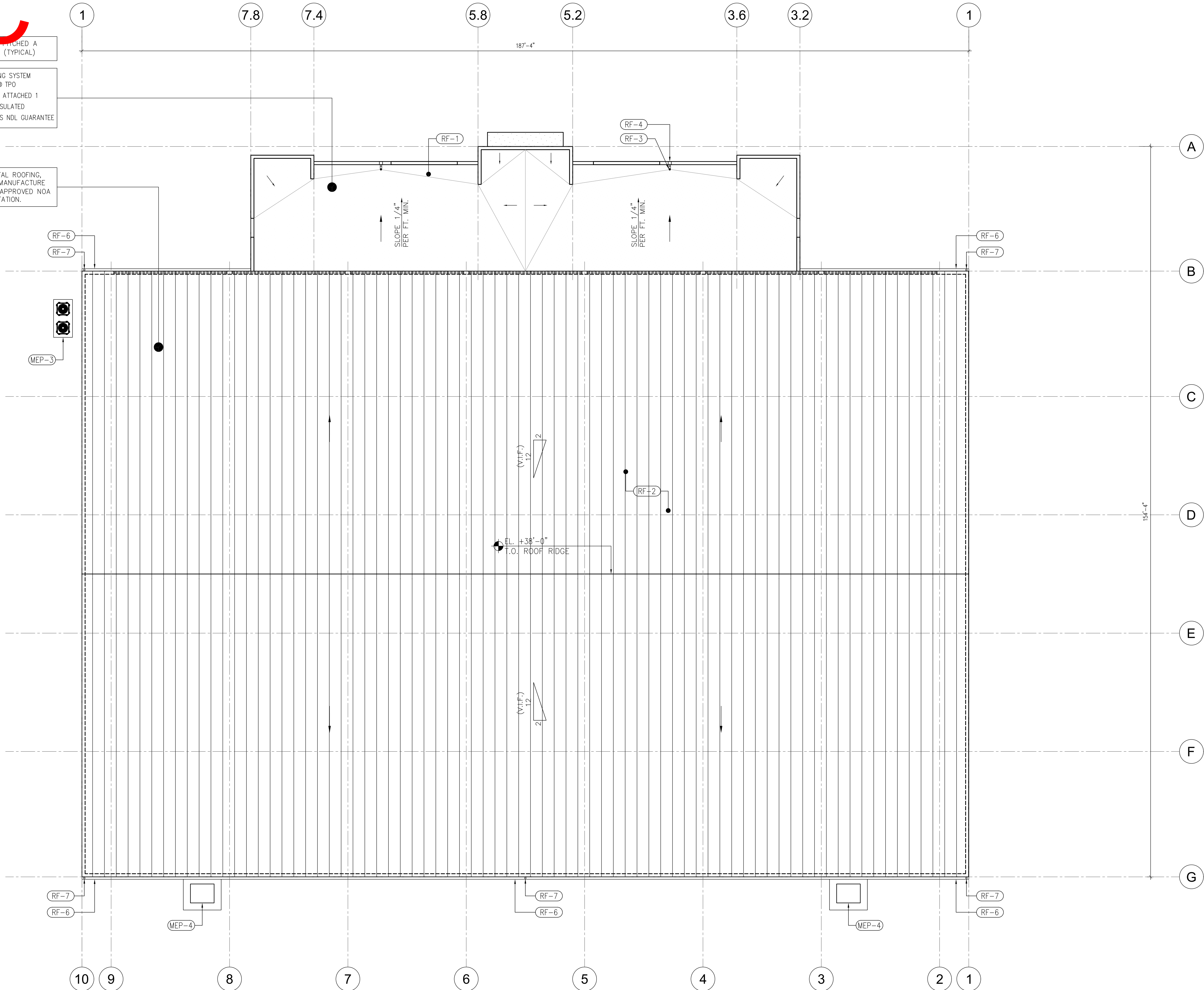
PZ23-12000009

10/02/2024

FLAT ROOF AREAS TO BE FINISHED A MINIMUM 1/4" PER FOOT. (TYPICAL)

ISO-1000 GAF ROOFING SYSTEM
EVERGUARD EXTREME® TPO
TPO EXTREME MECHANICALLY ATTACHED 1
60 MIL EXTREME TPO, INSULATED
SEE GAF SPECIFICATIONS, 25 YEARS NDL GUARANTEE

WHITE STANDING SEAM METAL ROOFING,
CONTRACTOR TO PROVIDED MANUFACTURE
APPROVED SHOP DWG'S AND APPROVED NOA
ASSEMBLY DOCUMENTATION.



1
A2.02

ROOF PLAN

SCALE: 3/32"=1'-0"

KEYNOTES:

*All keynotes may not apply.
(X-X) KEYNOTE TYPE

ACCESSORIES

- A-1 EXTERIOR IMPACT RESISTANT STOREFRONT, SEE SCHEDULE
- A-2 EXTERIOR IMPACT RESISTANT WINDOW, SEE SCHEDULE
- A-3 EXTERIOR IMPACT RESISTANT STOREFRONT W/DOUBLE DOOR, SEE SCHEDULE
- A-4 EXTERIOR IMPACT DOOR, SEE SCHEDULE
- A-5 EXTERIOR FIRE MANUFACTURE ALUMINUM WALL CLADDING, SUBMIT SHOP DRAWINGS
- A-6 EXTERIOR DECORATIVE SPANDREL WINDOW
- A-7 HEAVY DUTY WINDER WAVE BIKE RACK (18 LOOPS 20 BIKES) INGROUND MOUNT
- A-8 POWDER COATED W/ROUT COVER
- A-8 KONE ELEVATOR MONOSPACE 3000X 2,000 LBS OR SIM, BY OTHERS, SUBMIT SHOP DRAWINGS
- A-9 NEW 36" HIGH ANODIZED CLASS-1 ALUMINUM CONTINUOUS HANDRAIL (DETAILS AND CONNECTIONS PER MANUFACTURE), SEE DTLS AT SHEET A6.0
- A-10 NEW 36" HIGH ANODIZED CLASS-1 ALUMINUM CONTINUOUS HANDRAIL WITH 42" HIGH GUARDRAIL, SEE ARCH DTLS (DETAILS AND CONNECTIONS PER MANUF.) SEE DTLS AT SHEET A6.0
- A-11 BUILT-IN MILLWORK DISPLAY CASE BY OTHERS, SUBMIT SHOP DRAWINGS
- A-12 NEW HI-LOW REFRIGERATED ADA DRINKING FOUNTAIN WITH BOTTLE FILLING STATION BY ELWAY OR SIMILAR
- A-13 LINE OF DROPPED CEILING ABOVE, SEE RCP PLANS
- A-14 LINE INDICATES HEADER ABOVE, SEE RCP PLANS
- A-15 LINE OF ROOF ABOVE
- A-16 34" MAX. HEIGHT VANITY ENGINEERING STONE TOP WITH UNDERMOUNT STAINLESS STEEL SINK BUILT-IN MILLWORK BELOW, SEE I.D. PLANS FOR FINISHES.
- A-17 NEW MIRROR TO BE AT 40" MAX TO THE BOTTOM OF REFLECTIVE AREA, PROVIDE BACKING AS NECESSARY, SEE I.D. PLANS FOR FINISH AND SELECTIONS.
- A-18 TYPICAL ACCESSIBLE GRAB BARS COMPLYING WITH ADA FBC 2020. (WALL MOUNT GRAB BARS SEE DETAIL A6.0)
- A-19 SCHLITZER-SCHNEE TILE TRANSITION STRIP OR SIM.
- A-20 6" HG WOOD BASE, SEE DETAIL
- A-21 NEW STUCCO SILL BAND, SEE DETAIL 7-A6.0
- A-22 VENDING MACHINE

WALL FINISHES

- W-1 NEW 8" CONCRETE BLOCK WALL WITH (2 COATS) CEMENTITIOUS FINISH (STUCCO). SEE WALL SCHEDULE FOR INTERIOR FINISHES.
- W-2 STEEL RIGID FRAME STRUCTURE, SEE STRUCTURAL PLANS
- W-3 STEEL COLUMN, SEE STRUCTURAL PLANS
- W-4 EXTERIOR METAL PANEL WITH SINGLE LAYER OF UNFACED INSULATION SECURED IN BETWEEN INTERIOR FRAMING AND ENERGY SAVER FABRIC INSTALLED AT INTERIOR SIDE OVER THE TOP OF FRAMING, STEEL BANDS ARE INSTALLED TO PROVIDED ADDITIONAL SUPPORT, SUBMIT SHOP DWGS.
- W-5 INTERIOR PARTITION WITH ACOUSTICAL INSULATION WHERE IS NOTED, NON LOAD BEARING METAL STUD INTERIOR FRAMING WITH 5/8" DRYWALL
- W-6 NEW EXTERIOR METAL COLUMN
- W-7 5/8" C.W.B. ON 1 5/8" 18 GA MTL FURRING AT 16" O.C. WITH R-4.1 REFLECTED FOIL INSULATION
- W-8 PROVIDED 48" HEIGHT TILE FINISH ON 5/8" DUROCK TILE BAKER BOARD THEN GREEN BOARD ABOVE WITH LATEX FINISH PAINT ON GALV. STEEL STUD (25 GA)

CEILING

- CLG-1 EXPOSED STRUCTURE ABOVE TO BE PAINTED WHITE COLOR
- CLG-2 2x2 ACOUSTICAL SUSPENDED CEILING TILE
- CLG-3 1 LAYER OF 5/8" FINISH GYP BOARD ATTACHED TO STUD OR JOIST MEMBER AS REQUIRED. SEE SCHEDULE
- CLG-4 1 LAYER OF 5/8" FINISH MOISTURE GYP BOARD ATTACHED TO STUD OR JOIST MEMBER AS REQUIRED.
- CLG-5 TENNIS COURT LIGHTING (SEE RCP A2.11 FOR DETAILS)
- CLG-6 ENERGY SAVER INSULATION SYSTEM

FOUNDATION / FLOOR SYSTEM

- F-1 CONCRETE HARD COURT SURFACE COVERED WITH ACRYLIC RESINS TO SEAL THE SURFACE AND MARK PLAYING LINES
- F-2 NEW 5" CONCRETE SLAB ON 6 MIL VAPOR BARRIER - LAP SEAMS 12" AND TAPE ON COMPACTED TERMITES TREATED FILL SEE STRUCT. FOR SLAB THICKNESS AND STEEL PLACEMENT
- F-3 NEW CONCRETE SIDEWALK POURED-IN PLACE WITH SLOPE
- F-4 AERIAL PRECAST CONCRETE FLOOR SYSTEM, SEE STRUCTURAL
- F-5 CONCRETE LANDING ON GALVANIZED METAL DECK, STEEL SHOP DWG'S TO BE PROVIDED FOR REVIEW AND APPROVAL
- F-6 STEEL PAN AND STEEL RISER WITH CONCRETE TREADS 1" OVERHANG TYP, STEEL SHOP DWG'S TO BE PROVIDED FOR REVIEW AND APPROVAL

ROOF

- RF-1 TPO ROOFING SYSTEM ON ISO INSULATION ON METL DECK AND METAL JOISTS, SUBMIT SHOP DRAWINGS.
- RF-2 WHITE STANDING SEAM METAL ROOFING PANEL OVER STEEL RIGID FRAME STRUCTURE WITH UNFACED INSULATION BLANKETS OVER ENERGY SAVER FABRIC INSTALLED WITH A NETWORK OF STEEL BANDING, SUBMIT SHOP DWGS
- RF-3 ROOF DRAIN, SEE MEP DWGS
- RF-4 ROOF OVERFLOW SCUPPER, SEE MEP DWGS
- RF-5 RAIN WATER LEADER, SEE MEP DWGS FOR SIZE AND CONNECTIONS
- RF-6 6"x8" ALUMINUM GUTTER, TYP.
- RF-7 ALUMINUM DOWNSPOUT

MECHANICAL / ELECTRICAL / PLUMBING

- MEP-1 ELECTRIC METER
- MEP-2 ELECTRICAL PANEL
- MEP-3 CONDENSING UNITS SEATING ON CONCRETE SLAB WITH SCREEN GREEN VEGETATION 3' HIGH MINIMUM, SEE MEP AND LANDSCAPE DWGS
- MEP-4 RTU UNITS SITTING ON CONCRETE SLAB WITH SCREEN GREEN VEGETATION 3' HIGH MINIMUM, SEE MEP AND LANDSCAPE DWGS
- MEP-5 FLOOR DRAIN

FINISH LEGEND		FF--XX FLOOR	WF--XX WALL
		BF--XX BASE	CF--XX CEILING
FLOOR:			
CONCRETE FLOOR WITH BROOM FINISH	FF-1	LATEX BASE PAINT	WF-1
PORCELAIN TILE	FF-2	PORCELAIN TILE	WF-2
EXTERIOR PORCELAIN TILE	FF-3	EPOXY BASE PAINT	WF-3
CARPET TILE	FF-4	F.R.P.	WF-4
UNFINISHED CONC.	FF-5		
BASE:			
6" WOOD BASE	BF-1	CEILING:	
6" PORCELAIN TILE	BF-2	2x2 ACOUSTIC CEILING TILES	CF-1
6" RUBBER COVE BASE	BF-3	REGULAR W/ 9/16" WHITE GRID	CF-2
NONE	BF-4	PAINTED G.W.B.	CF-3
		PAINTED STUCCO FINISH	CF-4
		UNFINISHED	
-- ALTERNATES ALLOWED, MUST BE SUBMITTED FOR APPROVAL BY ARCHITECT, ID, AND OWNER PRIOR TO PROCUREMENT			
-- ALL FINISHES TO BE APPROVED BY OWNER PRIOR TO PROCUREMENT AND INSTALLATION			
-- COLORS AND TYPE TO BE DETERMINED AND SELECTED BY OWNER			
PLAN LEGEND			
NEW EXTERIOR CMU WALL	DOOR TYPE	KEYNOTES	WINDOW TYPE TAG
NEW EXTERIOR WOOD FRAMED WALL	WALL TYPE	PORTABLE FIRE EXTINGUISHER	
NEW INTERIOR FRAMING		TYPE 2A USBC WITH CURRENT SERVICE TAGS	
NEW INTERIOR FRAMING TO BE SOUND INSULATED		LARGEST SIZE RECESSED ALUM. CABINET, OR APPROVED EQUAL	
NEW COLUMN		ALL WALL HANG I.E. NO CABINET AS LOCATIONS SELECTED BY OWNER	
NOTES:			
• ALL CASWORK / MILLWORK IDENTIFIED IS GENERAL IN SCOPE AND DESIGN. SUBCONTRACTOR IS TO PROVIDE DETAILED SHOP DRAWINGS FOR APPROVAL BY OWNER AND ARCHITECT PRIOR TO PROCUREMENT AND INSTALLATION.			
• CONTRACTOR TO VERIFY ALL FINISHES AND COLORS WITH OWNER, PRIOR TO PROCUREMENT AND APPLICATION			
• TYPICAL DIMENSIONS ARE NOMINAL, HOLD CLEAR DIMENSIONS ONLY WHERE INDICATED			
• CONTRACTOR TO VERIFY (CORRECT IN FIELD) ALL EXISTING DIMENSIONS AND COLUMN LINES FOR WORK, IF ANY DISCREPANCIES ARE FOUND NOTIFY ARCHITECT.			
• PROVIDE BLOCKING IN WALL AS REQUIRED			
• VERIFY ALL DIMENSIONS IN FIELD AND REPORT DISCREPANCIES/OUTLET LOCATIONS HAVE BEEN SHOWN FOR COORDINATION ONLY. ELECTRICAL PLANS SUPERSEDES ARCHITECTURAL. ALL OUTLET LOCATIONS TO BE CONFIRMED BY OWNER.			
• PROVIDE A VINYL REDUCER AT ALL THRESHOLDS AND AT ADJOINING DISPARATE FLOOR MATERIALS. PROVIDE A FLARED TILE REDUCER AT TILED THRESHOLDS. ALL CHANGES IN ELEVATION OR THRESHOLDS SHALL BE 1/4" OR 5/8" WHERE A FLARED THRESHOLD EXISTS.			

REVISIONS

1. DRC COMMENTS	09.27.23
2. DRC COMMENTS	12.08.23
3. DRC COMMENTS	08.21.24
4.	
5.	
6.	
7.	
8.	
9.	
10.	

ALL IDEAS, DESIGN, ARRANGEMENTS, AND PLANS INDICATED OR REPRESENTED BY THIS DRAWING ARE OWNED BY AND PROPERTY OF THIS OFFICE, AND WHERE CREATED, ENVELOPED, AND DEVELOPED FOR USE OR, AND IN CONNECTION WITH THE SPECIFIED PROJECT, NONE OF SUCH IDEAS, DESIGN, ARRANGEMENTS, AND PLANS SHALL BE USED BY, OR DISCLOSED TO ANY PERSON, FIRM, OR CORPORATION FOR ANY PURPOSE WITHOUT WRITTEN PERMISSION OF RWB LINARES ARCHITECTURE, INC.

FLORIDA INDOOR TENNIS
POMPAHO BEACH, FL 33069

3000 NORTH MILITARY TRAIL, SUITE 209
BOCA RATON, FLORIDA 33431
PHONE 561-391-0081 FAX 561-391-0085
EMAIL mail@rwb-arch.com

RWB
Linaires
ARCHITECTURE

PROJECT # 21-035

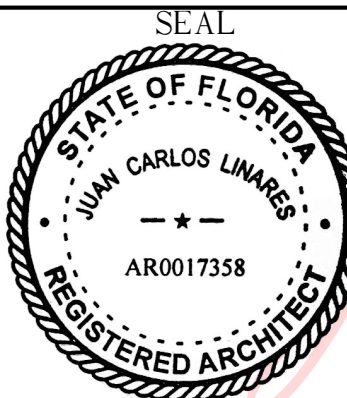
DATE PER ISSUANCE

SHEET # 3

A2.02

JUAN C. LINARES

Digitally signed
by Juan C Linaires
Date: 2024.08.21
12:11:45 -04'00'



AA26000640